

**THE FORT STOCKTON CONVENTION & VISITOR'S BUREAU
WILL MEET FOR A SPECIAL MEETING ON
WEDNESDAY, JUNE 30, 2021 AT 12:00 P.M.**

**HOST LOCATION:
1000 E RAILROAD AVE (VISITOR CENTER)
FORT STOCKTON, TX 79735**

COMMENTS FROM THE AUDIENCE ON REGULAR AGENDA ITEMS: Citizens who desire to address the Fort Stockton Convention & Visitor's Bureau regarding matters on the Regular Agenda shall approach the podium when the item is to be considered. Discussion by Fort Stockton Convention & Visitor's Bureau Board Members will only occur when an agenda item is scheduled for consideration. Prior to making comments, each speaker will be required to provide his/her name and residential address. Speakers will be limited to 3 minutes. Speakers making personal, impertinent, profane, or slanderous remarks will be removed from the Convention Center Board Room and will be removed from meeting and not allowed re-entry.

1. Call to Order.
2. Invocation
3. Discuss/Act upon purchase of tables and chairs for Convention Center. pg. 2
4. Discuss/Act upon purchase of office seating furniture.
5. Discuss/Act upon Meeting Room Audio. pg. 10
6. Discuss/Act upon Meeting Room System Repair and Testing. pg. 11
7. Discuss/Act upon accepting quote for the renovation of the outside patio area for the Convention Center. pg. 12
8. Discuss/Act upon Events.
9. CVB Director Report
10. Questions and answers from media on Agenda Items.
11. Adjourn

This facility is wheelchair accessible & parking spaces are available. Request accommodation or interpretive services must be made 48 hours prior to this meeting. Please contact the Convention & Visitor's Bureau office at (432)290-0106 for further information.

Dated this 25th day of June, 2021 Fort Stockton

Notice posted on June 25, 2021 at 1:45 clock A.M/P.M.

By:



Removed Dated this the _____ day of _____, 2021 at _____ A.M/P.M. By: _____



Furnishing great places to learn.

For assistance, please contact:

Izzy Wilson

Phone: 866-619-5309

Fax: 866-619-4309

www.schooloutfitters.com • PO Box 1367 • Middletown OH 45042-1367

izzy.wilson@schooloutfitters.com

Quote Summary

Quote #: QUO11285439
Valid through: 07/16/2021

Bill to:
City of Fort Stockton
Crystal Lopez
2181 W I 10
FORT STOCKTON TX 79735 USA

Phone: 1 (462) 290-0106
Fax: N/A
Email: cvb@fortstockton.org

Ship to:
City of Fort Stockton
Crystal Lopez
2181 W I 10
FORT STOCKTON TX 79735 USA

Phone: 1 (462) 290-0106
Fax: N/A
Email: cvb@fortstockton.org

Item	SKU#	Description	Qty.	List	% Off	Price Per Item <small>(including options)</small>	Total Price
------	------	-------------	------	------	-------	--	-------------

1.	COR-CFA3672PX	High-Pressure Top Folding Table - Adjustable Height (36" W x 72" L)	125	\$431.00	38%	\$268.79	\$33,598.75
----	---------------	---	-----	----------	-----	----------	-------------



Options:

- Table – 07 Black Granite Top/Black Frame/Black T-Mold (+ \$0.00)
- Adjustable Leg Height – Standard 22-32" (+ \$0.00)

Estimated Delivery:

8 business days after order confirmation

2.	NOR-FEI1016-28-FEI3034-PK-SO	Pack of 28 Heavy-Duty Plastic Stacking Chairs w/ Universal Dolly - Black Seat & Black Frame	29	\$3,833.04	52%	\$1,839.86*	\$53,355.94
----	------------------------------	---	----	------------	-----	-------------	-------------



Estimated Delivery:

We'll provide you when you call to place your order

PLEASE NOTE: BUNDLED ITEMS MAY SHIP SEPARATELY

*Special product pricing based on Buyboard (Contract # 584-19)

Shipping & Handling Breakdown

Items Shipping From:	Shipping Via:	Service(s) Included:
Correll	BNSF Logistics	Call Ahead Crystal Lopez 1 (462) 290-0106
SO-Goff Distribution	BNSF Logistics	Call Ahead Crystal Lopez 1 (462) 290-0106

Product SubTotal: \$86,954.69

Shipping & Handling: \$0.00

Sales Tax: 7,173.76

Grand Total: \$94,128.45

Important Shipping Information

Shipping is tail gate, requiring customer to unload from truck. Lift gate and inside delivery are available for additional charges.

Please remember to inspect your order at the time of delivery. Do not throw away any of the original packaging until inspection is completed. Any missing parts or damages must be reported to customer service at 1-866-619-1776 within 5 business days of delivery.

All quotations are for tailgate delivery, F.O.B. factory, unless otherwise noted.

Sales Representative Comments

Due to the continuous fluctuation with cost of products, increased shortage of raw materials and increased transportation demands, it is important to finalize your ordering needs soon. Please contact us for any assistance needed to proceed with your order.

FORKLIFT THERE

Thank you for the opportunity to earn your business.

For Assistance: Izzy Wilson • Phone: 866-619-5309 • Fax: 866-619-4309 • izzy.wilson@schooloutfitters.com

Item Details

Correll

High-Pressure Top Folding Table - Adjustable Height (36" W x 72" L)



The Correll High-Pressure Top Folding Table has a ¾" thick core, making it tough enough to handle heavy daily use. A steel apron and banding on the edges protect the folding table from wear and tear. The steel legs lock open and the table is easy to set up. Choose from two adjustable heights - 22"-32" or 16"-26". Both adjust in 1" increments.

Specifications

Table Shape:	Rectangle
Top Material:	High-pressure top on 3/4" particleboard
Banding:	Vinyl T-mold edge
Legs:	1" 18-gauge steel
Glides:	Mar-proof plastic foot caps
Other Info:	1 5/8" one-piece steel apron
Warranty:	5-year limited
Overall Width:	36"
Overall Length:	6' L
Overall Height:	16" to 26" 22" to 32"
Type:	Adjustable Height
Assembly:	Assembled
Product Weight (Lbs):	88

Options

Adjustable Leg Height

Table Color:

-  01 Walnut Top/Brown Frame/Black T-Mold
-  06 Medium Oak Top/Brown Frame/Brown T-Mold
-  07 Black Granite Top/Black Frame/Black T-Mold
-  15 Gray Granite Top/Dove Gray Frame/Dove Gray T-Mold
-  Blue Top/Black Frame/Black T-Mold
-  Green Top/Black Frame/Black T-Mold
-  Red Top/Black Frame/Black T-Mold
-  White Top/Black Frame/Black T-Mold
-  Yellow Top/Black Frame/Black T-Mold

Item	SKU#	Description	Qty.	List	% Off	Price Per Item <small>(including options)</small>	Total Price
1.	COR-CFA3672PX	High-Pressure Top Folding Table - Adjustable Height (36" W x 72" L)	125	\$431.00	38%	\$268.79	\$33,598.75
Options: <input checked="" type="checkbox"/> Table - 07 Black Granite Top/Black Frame/Black T-Mold (+ \$0.00) <input type="checkbox"/> Adjustable Leg Height - Standard 22-32" (+ \$0.00)							

Item Details



Norwood Commercial Furniture

Pack of 28 Heavy-Duty Plastic Stacking Chairs w/ Universal Dolly - Black Seat & Black Frame

The Pack of Heavy-Duty Plastic Stacking Chairs with Universal Dolly from Norwood Commercial Furniture provides your classroom or office with versatile, comfortable seating. The polypropylene seat and back easily flexes with users as they change positions, so they're sure to stay comfortable. A durable steel frame holds up to 450 pounds to accommodate guests of all sizes. This set of 28 chairs comes with Norwood's Universal Dolly. Simply stack your chairs on the dolly to move them around your facility with ease. This dolly is adjustable, so it can be used with sled-base chairs of various sizes, and features a sturdy steel construction with four non-marring casters that allow you to move your chairs quickly and easily.

Specifications

Chair Material:	Polypropylene w/ 16-gauge steel frame & powder coat finish
Weight Capacity:	450 lbs. (Chairs)
Seat Height:	18" H
Chair Back Height:	12"
Seat Size:	18 1/4" W x 16 1/2" D
Casters/Glides:	Non-marring glides
Chair Dimensions:	21 1/4" W x 23" D x 31" H
Dolly Material:	Steel w/ powder coat finish
Dolly Casters/Glides:	5" non-marring casters (2 locking)
Dolly Capacity:	Up to 30 sled base stack chairs
Dolly Dimensions:	20" - 29" W (adjustable) x 37 1/2" D x 22" H
Other Info:	Chairs are stackable
Warranty:	5-year limited on chairs; 10-year limited on dolly
Assembly:	Assembled
Product Weight (Lbs):	424.53

Item	SKU#	Description	Qty.	List	% Off	Price Per Item (including option(s))	Total Price
2.	NOR-FEI1016-28-FEI3034-PK-SO	Pack of 28 Heavy-Duty Plastic Stacking Chairs w/ Universal Dolly - Black Seat & Black Frame	29	\$3,833.04	52%	\$1,839.86*	\$53,355.94



Furnishing great places to learn.

For assistance, please contact:

Izzy Wilson
 Phone: 866-619-5309
 Fax: 866-619-4309

www.schooloutfitters.com • PO Box 1367 • Middletown OH 45042-1367

izzy.wilson@schooloutfitters.com

Quote Summary



Quote #: QUO11285441
 Valid through: 07/16/2021

Bill to:
 City of Fort Stockton
 Crystal Lopez
 2181 W I 10
 FORT STOCKTON TX 79735 USA

 Phone: 1 (462) 290-0106
 Fax: N/A
 Email: cvb@fortstockton.org

Ship to:
 City of Fort Stockton
 Crystal Lopez
 2181 W I 10
 FORT STOCKTON TX 79735 USA

 Phone: 1 (462) 290-0106
 Fax: N/A
 Email: cvb@fortstockton.org

Item	SKU#	Description	Qty.	List	% Off	Price Per Item <small>(including options)</small>	Total Price
1.	COR-CFA3672PX	High-Pressure Top Folding Table - Adjustable Height (36" W x 72" L)  Options: Adjustable Leg Height – Standard 22-32" (+ \$0.00) <input checked="" type="checkbox"/> Table – 07 Black Granite Top/Black Frame/Black T-Mold (+ \$0.00) Estimated Delivery: 11 business days after order confirmation	25	\$431.00	37%	\$269.51	\$6,737.75
2.	NOR-FEI1016-28-FEI3034-PK-SO	Pack of 28 Heavy-Duty Plastic Stacking Chairs w/ Universal Dolly - Black Seat & Black Frame  Estimated Delivery: We'll provide you when you call to place your order PLEASE NOTE: BUNDLED ITEMS MAY SHIP SEPARATELY *Special product pricing based on Buyboard (Contract # 584-19)	6	\$3,833.04	52%	\$1,839.86*	\$11,039.16

Shipping & Handling Breakdown

Items Shipping From:	Shipping Via:	Service(s) Included:
Correll	SOUTHEASTERN FREIGHT LINES	Call Ahead:Crystal Lopez 1 (462) 290-0106
SO-Goff Distribution	SOUTHEASTERN FREIGHT LINES	Call Ahead:Crystal Lopez 1 (462) 290-0106

Product SubTotal: \$17,776.91
 Shipping & Handling: \$0.00
 Sales Tax: 1,466.60
Grand Total: \$19,243.51

Important Shipping Information

Shipping is tail gate, requiring customer to unload from truck. Lift gate and inside delivery are available for additional charges.

Please remember to inspect your order at the time of delivery. Do not throw away any of the original packaging until inspection is completed. Any missing parts or damages must be reported to customer service at 1-866-619-1776 within 5 business days of delivery.

All quotations are for tailgate delivery, F.O.B. factory, unless otherwise noted.

Sales Representative Comments

Due to the continuous fluctuation with cost of products, increased shortage of raw materials and increased transportation demands, it is important to finalize your ordering needs soon. Please contact us for any assistance needed to proceed with your order.

FORKLIFT THERE

Thank you for the opportunity to earn your business.

For Assistance: Izzy Wilson • Phone: 866-619-5309 • Fax: 866-619-4309 • izzy.wilson@schooloutfitters.com

Item Details

Correll

High-Pressure Top Folding Table - Adjustable Height (36" W x 72" L)



The Correll High-Pressure Top Folding Table has a 3/4" thick core, making it tough enough to handle heavy daily use. A steel apron and banding on the edges protect the folding table from wear and tear. The steel legs lock open and the table is easy to set up. Choose from two adjustable heights - 22"-32" or 16"-26". Both adjust in 1" increments.

Specifications

Table Shape:	Rectangle
Top Material:	High-pressure top on 3/4" particleboard
Banding:	Vinyl T-mold edge
Legs:	1" 18-gauge steel
Glides:	Mar-proof plastic foot caps
Other Info:	1 5/8" one-piece steel apron
Warranty:	5-year limited
Overall Width:	36"
Overall Length:	6' L
Overall Height:	16" to 26" 22" to 32"
Type:	Adjustable Height
Assembly:	Assembled
Product Weight (Lbs):	88

Options

Adjustable Leg Height

Table Color:

- 01 Walnut Top/Brown Frame/Black T-Mold
- 06 Medium Oak Top/Brown Frame/Brown T-Mold
- 07 Black Granite Top/Black Frame/Black T-Mold
- 15 Gray Granite Top/Dove Gray Frame/Dove Gray T-Mold
- Blue Top/Black Frame/Black T-Mold
- Green Top/Black Frame/Black T-Mold
- Red Top/Black Frame/Black T-Mold
- White Top/Black Frame/Black T-Mold
- Yellow Top/Black Frame/Black T-Mold

Item	SKU#	Description	Qty.	List	% Off	Price Per Item (including options)	Total Price
1.	COR-CFA3672PX	High-Pressure Top Folding Table - Adjustable Height (36" W x 72" L)	25	\$431.00	37%	\$269.51	\$6,737.75
Options: Adjustable Leg Height – Standard 22-32" (+ \$0.00) <input checked="" type="checkbox"/> Table – 07 Black Granite Top/Black Frame/Black T-Mold (+ \$0.00)							

Item Details



Norwood Commercial Furniture

Pack of 28 Heavy-Duty Plastic Stacking Chairs w/ Universal Dolly - Black Seat & Black Frame

The Pack of Heavy-Duty Plastic Stacking Chairs with Universal Dolly from Norwood Commercial Furniture provides your classroom or office with versatile, comfortable seating. The polypropylene seat and back easily flexes with users as they change positions, so they're sure to stay comfortable. A durable steel frame holds up to 450 pounds to accommodate guests of all sizes. This set of 28 chairs comes with Norwood's Universal Dolly. Simply stack your chairs on the dolly to move them around your facility with ease. This dolly is adjustable, so it can be used with sled-base chairs of various sizes, and features a sturdy steel construction with four non-marring casters that allow you to move your chairs quickly and easily.

Specifications

Chair Material:	Polypropylene w/ 16-gauge steel frame & powder coat finish
Weight Capacity:	450 lbs. (Chairs)
Seat Height:	18" H
Chair Back Height:	12"
Seat Size:	18 1/4" W x 16 1/2" D
Casters/Glides:	Non-marring glides
Chair Dimensions:	21 1/4" W x 23" D x 31" H
Dolly Material:	Steel w/ powder coat finish
Dolly Casters/Glides:	5" non-marring casters (2 locking)
Dolly Capacity:	Up to 30 sled base stack chairs
Dolly Dimensions:	20" - 29" W (adjustable) x 37 1/2" D x 22" H
Other Info:	Chairs are stackable
Warranty:	5-year limited on chairs; 10-year limited on dolly
Assembly:	Assembled
Product Weight (Lbs):	424.53

Item	SKU#	Description	Qty.	List	% Off	Price Per Item <small>(including options)</small>	Total Price
2.	NOR-FEI1016-28- FEI3034-PK-SO	Pack of 28 Heavy-Duty Plastic Stacking Chairs w/ Universal Dolly - Black Seat & Black Frame	6	\$3,833.04	52%	\$1,839.86*	\$11,039.16

ABSOLUTE AVL

-AUDIO-VIDEO-LIGHTING-

Henry Greer
 Just Macs LLC
 DBA: Absolute AVL
 410 S Pecos Street
 Midland TX 79701
 432-312-3272
www.absoluteavl.com
henry@absoluteAVL.com

Quote No. 6152021
 Quote Date: June 15, 2021
 Customer City of Ft. Stockton
 Contact Chris Alexander
 Address:
 Phone: 432.940.9893
 E-mail: chris@directbytes.net
 Fax:

Description	Units	Cost Per Unit	Amount
Meeting Room Audio Installation	1	\$ 49,903.50	\$ 49,903.50
Rework, installation and integration of New JBL Audio systems for meeting room			\$ -
Configuration, Tuning, Testing and Training			\$ -
Travel and Onsite Labor Fees			\$ -
Rigging, Cabling and Installation materials			\$ -
JBL 3732 Front Array Speakers	2	\$ -	\$ -
JBL C222HP Center Channel Speaker	1	\$ -	\$ -
JBL 4642A Subs	2	\$ -	\$ -
JBL 9300 Surround Speakers with Brackets	12	\$ -	\$ -
JBL CPi2000 System Processor	1	\$ -	\$ -
Crown Dsi1000 Amps	6	\$ -	\$ -
Crown DSi2000 Amps	1	\$ -	\$ -
Crown Dsi 8MN Studio Monitor	1	\$ -	\$ -
			\$ -

NOTE: Shipping is billed at additional costs.

Invoice Subtotal	\$49,903.50
Tax Rate	0.00%
Sales Tax	-
Additional Discount	
Discount total	0.00
Deposit Received	
TOTAL	\$ 49,903.50

Quote is good for 30 days.
 Sales Taxes are included

Thank you for your business!

ABSOLUTE AVL

-AUDIO-VIDEO-LIGHTING-

Henry Greer Just Macs LLC DBA: Absolute AVL 410 S Pecos Street Midland TX 79701 432-312-3272 www.absoluteavl.com henry@absoluteAVL.com	Quote No. 6162021 Quote Date: June 16, 2021 Customer City of Ft. Stockton Contact Chris Alexander Address: Phone: 432.940.9893 E-mail: chris@directbytes.net Fax:
---	--

Description	Units	Cost Per Unit	Amount
Meeting Room Video System Repair and Testing	1	\$ 7,750.00	\$ 7,750.00
Testing and configuration of existing Video Projection systems			\$ -
Parts and Equipment may not be fully know until testing is complete.			\$ -
Phone support and Testing with Christie Digital Projection			\$ -
Firmware update for projection systems.			\$ -
Travel and Onsite Labor fees. 2 Techs 3 Days.			\$ -
Clean up and testing of Video control room systems and racks.			\$ -
			\$ -
			\$ -
			\$ -
			\$ -
			\$ -
			\$ -
			\$ -

NOTE: Shipping is billed at additional costs.

Invoice Subtotal	\$7,750.00
Tax Rate	0.00%
Sales Tax	-
Additional Discount	
Discount total	0.00
Deposit Received	
TOTAL	\$ 7,750.00

Quote is good for 30 days.
 Sales Taxes are included

Thank you for your business!

Hernandez Construction
 607 N Rooney ST
 Fort Stockton, TX 79735 US
 +1 4323609816
 weldinghdz@gmail.com

ADDRESS

Fort Stockton Plaza
 2181 Interstate 10 W
 Ft. Stockton, TX 79735

ESTIMATE # 1163
DATE 06/14/2021

ACTIVITY	QTY	RATE	AMOUNT
Labor & Material Start by removing partial of fence surrounding mini golf course. Once open we will remove cement, artificial rock, turf, and brick. Once off we will then dispose of them properly in containers that Ft. Stockton plaza has provided for us.	1	10,000.00	10,000.00
Labor & Material Once mini gulf course is cleared and dirt is visible we will preserve trees by digging them out and lowering or building a circler border around them. We will then start up grading dirt to Eastside of Plaza park in order to have a elevation from East to West of 0 surface grade to 3 foot higher grade that way audience is able to see event from a further east.	1	8,000.00	8,000.00
Labor & Material Once ground elevation is complete we will then start trenching to run irrigation lines with pop up sprinklers and connect to main water supply .Once Sprinkler is installed we will then install Grass sod patches to cover Plaza park and install fence that was removed.	1	17,000.00	17,000.00
Labor & Material On awning frame Westside of the Plaza park I will install a tin roof and skirting onto existing frame and remove lighting and install new patio ceiling fans.	1	4,000.00	4,000.00

TOTAL **\$39,000.00**

Accepted By

Accepted Date

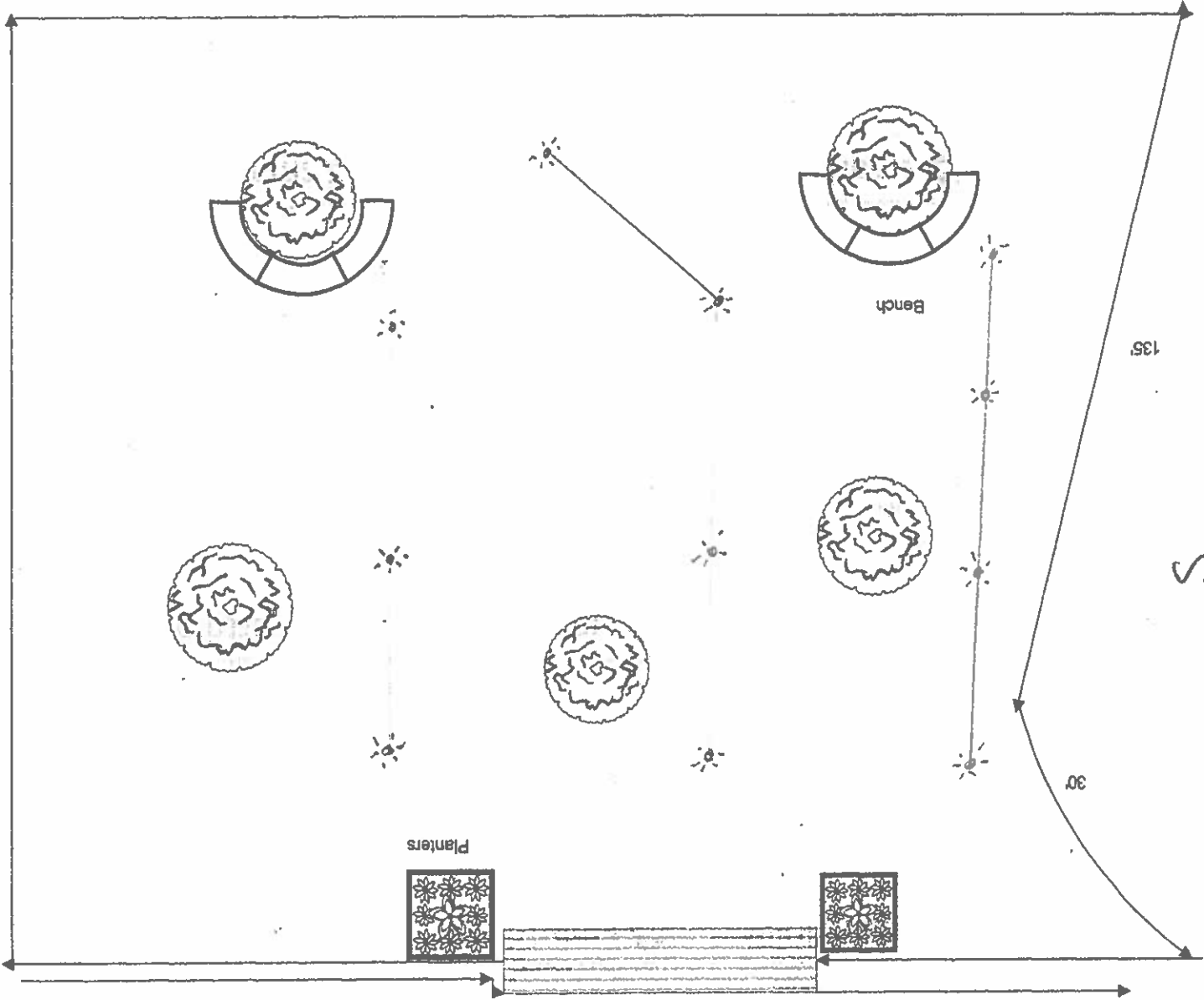
N

137

Sprinkler

III

242



E